

Home
Edition

For
Reference
Use
Revised
January 2023

Garbage **Sorting** and **Disposal** Guidebook



Nagi Town

Reduce



Decrease the amount of waste we create.

- Bring your own shopping bag and refuse plastic bags.
- Prioritize refillable items.
- Refuse excessive or unnecessary wrapping.
- Be careful not to be tempted by low prices and overbuy.
- Eliminate food waste from cooking too much or not eating everything.

Let's Practice the

3R's

of Waste Management!

We can build a circular economy together!

Reuse



Use items multiple times.

- Prioritize returnable (reusable) containers when purchasing.
- Give items that you don't need to other people. Use flea markets and recycle shops.
- Return hangers from dry cleaners and sake bottles to the seller.

Recycle



Reuse items as materials.

- Dispose of glass bottles, cans, plastic bottles, newspapers, magazines and cardboard on the designated collection days.
- Make use of in-store collection services at supermarkets (trays, milk cartons, etc.)



Aim to Minimize Waste!



Properly sort
recyclable waste.



Give items that can
be used to those
who need them.



Use up items
completely.



Appropriately
dispose of
industrial waste.



Nagi Town



Tsuyama City



Kagamino Town



Shoo Town



Misaki Town

Tsuyama Sphere Resource Recycling Facility Committee (Tsuyama Sphere Clean Center) is composed of 1 city and 4 towns in the Tsuyama Sphere.



Garbage Disposal Etiquette

- 1 Dispose of burnable trash in the designated trash bags.
(Not required when bringing trash to the Tsuyama Sphere Clean Center directly.)
- 2 Adhere to the garbage sorting rules.

3 Put your trash in the designated area (trash station).

4 Put out your trash by 8:30 a.m. on the morning of trash collection days.

5 Dispose of trash safely and hygienically.
(Safe disposal of spray cans, gas canisters, disposable lighters, blades, etc.; remove liquid from food waste; etc.)



Uncollectible Cases

• Trash is disposed of in the incorrect category.

I.e., recyclables and nonburnable trash are put in the burnable trash station.




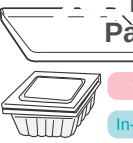


• Incorrect items are put in the designated trash bags.

I.e., nonburnable trash is mixed in with burnable trash.

• Burnable trash is not disposed of in Nagi Town-designated trash bags.



Recyclable Disposal by Category

 <p>Can</p> <p>Trash Station</p> <p>Group (Waste) Collection</p> <p>In-Store Collection</p>	 <p>Glass Bottle</p> <p>Trash Station</p> <p>In-Store Collection</p>
 <p>Plastic Bottle</p> <p>Trash Station</p> <p>In-Store Collection</p>	 <p>Plastic Packaging</p> <p>Trash Station</p> <p>In-Store Collection</p>
 <p>Used Paper</p> <p>Trash Station</p> <p>Group (Waste) Collection</p> <p>In-Store Collection</p>	 <p>Used Clothing</p> <p>Trash Station</p> <p>Group (Waste) Collection</p> <p>In-Store Collection</p>

*In-Store Collection varies by store.

*Fees apply when bringing trash to the Clean Center directly.

Table of Contents

Let's Practice the 3 R's of Waste Management!	1
Aim to Minimize Waste!	1
Garbage Disposal Etiquette	2
Uncollectible Cases	2
Recyclable Disposal by Category	2
[Burnable] Burnable Trash Disposal	3 - 4
[Nonburnable] Nonburnable Trash Disposal	5 - 6
[Recyclables] Glass Bottle Disposal	7 - 8
[Hazardous Waste] Battery, Fluorescent Lamp, Mercury Thermometer Disposal	8

[Recyclables] Can and Plastic Bottle Disposal	9 - 10
Caution	11
[Recyclables] Paper and Fabric Disposal	12
[Recyclables] Plastic Packaging Disposal	13 - 14
Bulk Trash Disposal	15
Home Appliance / Computer Recycling	16
Items Not Collected by the Town	17
Garbage Sorting Reference Chart	18 - 22
Where to Bring in Trash (Tsuyama Sphere Clean Center)	Back Cover

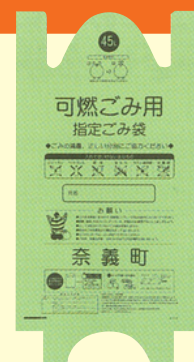


Burnable Trash Disposal

Disposal Rules and Etiquette

- Please put trash in the **green** designated trash bags.
- Please bring trash to the designated collection area by 8:30 a.m. on trash collection days.
- Please properly sort out paper and other recyclables.

Designated trash bags
come in
20-, 30- and 45-liter
sizes



Disposal Precautions

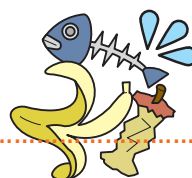
- Solidify or absorb **cooking oil** into newspaper or cloth before disposing.
*Do not dispose of oil still in a bottle (in liquid form).
- Break up **bamboo skewers** and other pointy objects into smaller pieces or wrap them in paper to allow for safe collection.
- Dispose of trimmed **wood and branches** in sizes up to 50 cm long and 10 cm thick. Additionally, make sure that they fit into the designated trash bags without making a hole.
- Remove fecal matter before disposing of **paper diapers**.
- Dispose of **dirty plastic packaging, used clothing and underwear** as burnable trash.
- **Futons and blankets** are generally bulk trash. Those that fit in a designated trash bag may be disposed of as burnable trash.



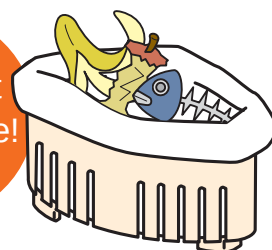
Key Points of Disposal

- 70-80% of food waste from the kitchen contains water.
Draining out food waste helps to greatly reduce waste.
- Newspapers, magazines, cardboard, paper cartons and clothing are not **burnable trash**. Dispose of them as **recyclables**.
- Some plastic items are **recyclable (plastic packaging)**. More information can be found in the Garbage Sorting Reference Guide at the end of this book.

*Dispose of plastic items as **burnable trash** when bringing to the Tsuyama Sphere Clean Center directly.



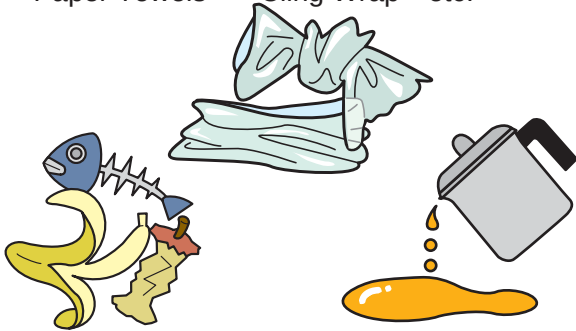
Drain out
food waste!



Acceptable Items

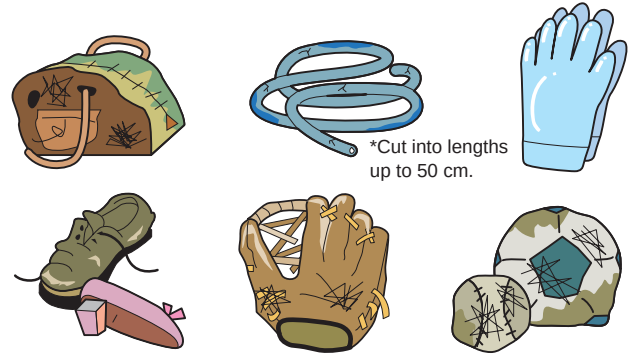
Kitchen (Food) Waste

- Cooking Waste • Leftover Food
- Egg Shells, Seafood Shells
- Cooking Oil (Solidify or absorb into cloth)
- Bamboo Skewers (Break up into smaller pieces or wrap in paper)
- Paper Towels • Cling Wrap etc.



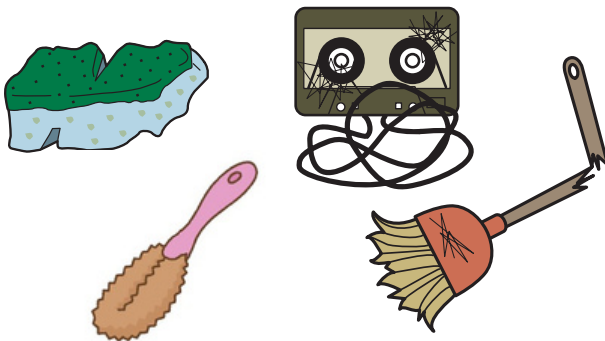
Leather, Rubber, Shoes

- Leather Shoes/Bag/Belt (Removable metal parts are nonburnable)
- Rubber Cord • Rubber Gloves
- Rubber Boots • Rubber Hose* • Sneakers
- Slippers • Gloves etc.



Plastic, Plastic Composite Items

- Plastic Bags • Sponges
- Cassette Tapes • Video Tapes etc.

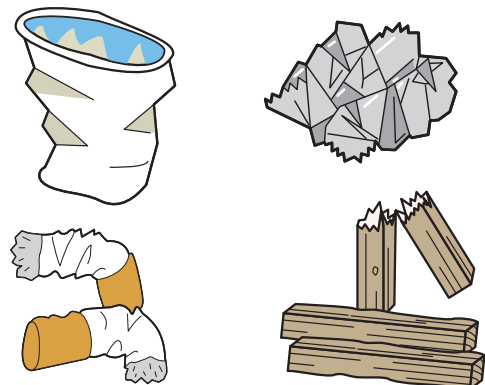


*Dispose of plastic-only items (excluding PVC items) as recyclable plastic packaging. More information can be found in the Garbage Sorting Reference Guide at the end of this book.

*Sorting of plastic items may change due to the Plastic Resource Circulation Act (enforced April 2022).

Paper / Fabric / Wood Waste

- Paper that Cannot Be Recycled (Waterproof Paper / Specially Treated Paper / Thermal Paper / Photographs / Stickers / Used Tissues and Other Sanitary Paper / Dirty Paper Containers, Wrapping Paper, etc.)
- Towels, Cloths • Wood Waste etc. (Cut into lengths up to 50 cm.)



Wood, Grass, Leaves

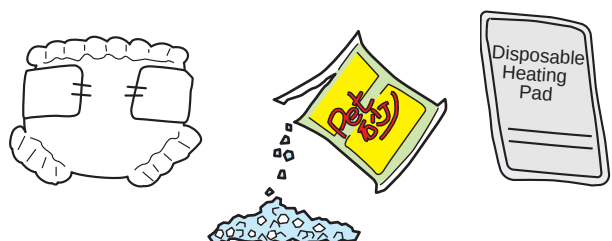
- Trimmed Wood and Branches (Cut into small sizes.)
- Grass (Remove Dirt) • Dead / Fallen Leaves



*As a general rule, cut into sizes of 50 cm long and 10 cm thick

Others

- Paper Diapers (Remove Fecal Matter)
- Disposable Heating Pad • Drying Agents
- Cold Insulation Packs • Pet Litter etc.





Nonburnable Trash Disposal

Disposal Rules and Etiquette

- Please put trash in the **containers** at the designated recycling station.
- Please properly sort out **cans**, **glass bottles**, **plastic bottles** and other recyclables.



Disposal Precautions

- When Disposing of Fragile Items and Blades:
Glass shards, knives and razor blades are all very dangerous. Please **wrap them in paper or put them in bags** so that they may be safely collected.
- When Disposing of Items with Batteries:
Please **remove batteries** before disposing. Batteries are hazardous trash, so please **dispose of them separately**.
- When Disposing of Lighters:
Remaining fluid in lighters is extremely dangerous and may cause the garbage truck to catch fire. **Use up contents completely**, then **dispose of the lighter separately**.



Unacceptable Items

● Bulk Trash

Breaking down fan heaters, electric fans and other **bulk trash** made of composite materials **to dispose of as nonburnable trash** is against the rules. **Such trash cannot be collected.**

Items that cannot fit in an eighteen-liter can are **bulk trash**. (See page 15.)

● Cans / Glass Bottles

Dispose of as recyclables (cans / glass bottles). (See pages 7-10.)

● Spray Cans / Gas Canisters

Use up contents completely, then dispose of as **recyclables (cans)**. (See pages 9-11.)
Remaining gas in cans is extremely dangerous and may cause fire or explosions.

